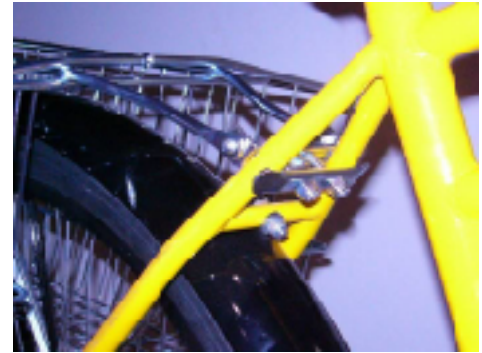




## Assembly Instructions

**PRODUCT** REAR TWIN BASKET  
**MODEL** 535

1. The basket comes with mounting hardware for attaching the neck arms to the bicycle's rear seat stays. First attach the neck arms to the outside U-bracket (with bent ends) using the small screws and nuts. Then attach the outside clamping bracket to the U-bracket, clamping the frame's seat stays as pictured. Do not tighten the screws at this time. We recommend that you place a towel or rag over the fender to prevent scratching while performing the installation.



2. On newer Husky bicycle models HD-105 and HD-120 where rear fender brackets are attached to the frame's drop-outs (as pictured below), the basket's legs must be attached to one of the drop-outs. First remove the fender bracket screw. Then place the basket leg between the drop-out and fender bracket. Replace the screw. You only need to use one of the fender bracket drop-outs on each side.

On older HD-105 and HD-120 models, fender brackets may be attached to the rear hub axle. In that case, the basket legs must also be attached to the axle, instead of drop-out. Remove the axle nuts, one at a time. Place the basket leg over the axle through the axle hole, and replace the axle nut.

Fender Bracket



Basket Leg

Axle Nut

If you have any questions, please call (800) 392-3337 or email us at [support@huskybicycles.com](mailto:support@huskybicycles.com)